

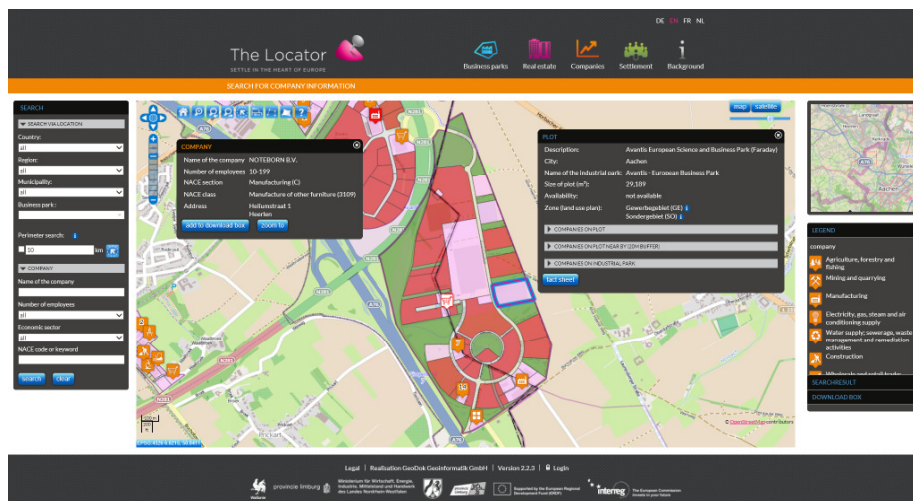
## Boundless information for enterprises – a true pilot and role model for Europe!

'The Locator' is a four-language, multifunctional web-based information system for business locations in the Euregio Meuse-Rhine (EMR, Belgium – Germany – The Netherlands). It is the first of its kind in Europe and creates transparency across national borders. It doesn't matter if you are looking for information about industrial space, business properties, enterprises or useful tips for your relocation: You will find everything you need to know about the future location of your enterprise right here.

'The Locator' evolved from an INTERREG IVA EMR-project, carried out between 2010 and 2014. Main target was to create transparency across borders in order to

- provide companies on (inter)national, (eu)regional as well as local level a comparable cross-border information for their (re-)location process,
- establish a joint cross-border location marketing for the economic development agencies of the constituting entities of the trinational region and
- setting up a true pilot as a role model for Europe!

Outcome of this pilot is a very user-friendly web-GIS-portal [www.the-locator.eu](http://www.the-locator.eu): Information is available in multiple languages, i.e. English, German, Dutch and French. A short demo film ensures that even inexperienced users soon get the hang of its main functions and operations. Specific technologies were provided in order to ensure an extraordinary quality and relevance of data and to support the workflow between information sources of the project partners, external data providers and 'The Locator' in a unique way.

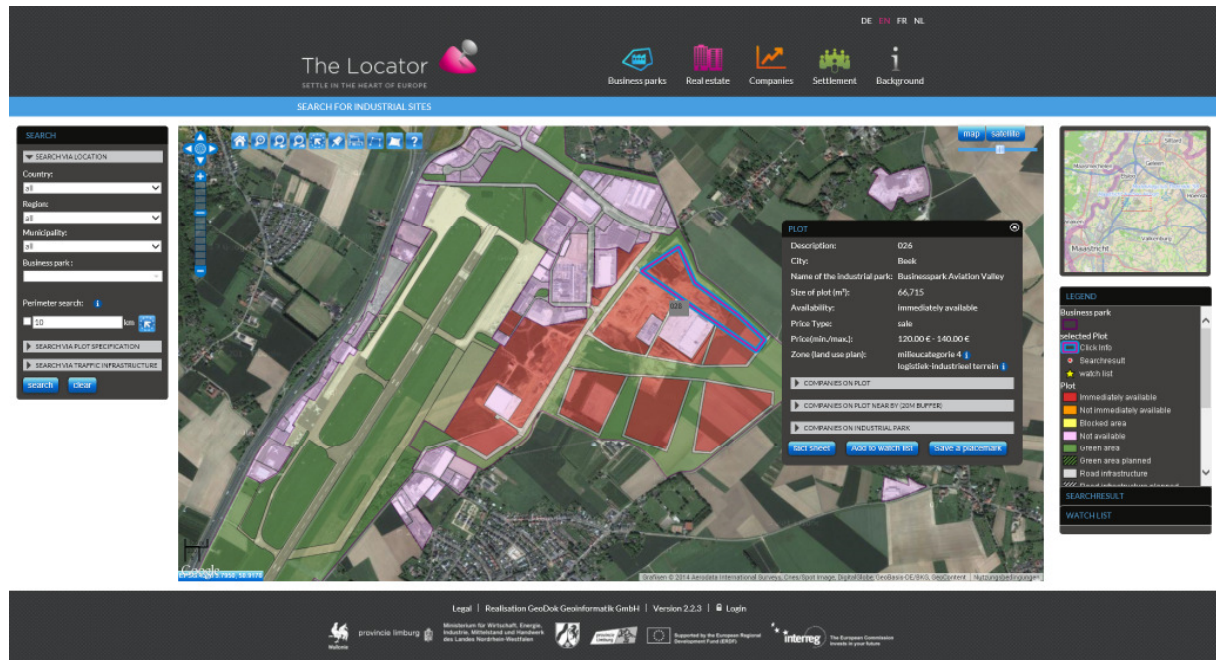


For a first glance please visit:

[www.the-locator.eu](http://www.the-locator.eu)  
[www.the-locator.de](http://www.the-locator.de)  
[www.the-locator.be](http://www.the-locator.be)  
[www.the-locator.nl](http://www.the-locator.nl)



We are open to initiate new European partnerships between EMR region and other cross-border regions as well as between IT-providers and regionally-based European companies.



For more information on background, transferability, feasibility, technologies, financial issues etc. please contact:

- **Ralf P. Meyer**  
 Head of department for Technology Transfer / Business Development Support at AGIT mbH – Regional Development Agency for Aachen Technology Region, lead partner of the cross-border initiative  
 Contact: ☎ +49 (0)241 96310-39  
 ✉ [r.meyer@agit.de](mailto:r.meyer@agit.de) (url: [www.agit.de](http://www.agit.de)), Aachen (D)
- **Jürgen Dressel**  
 CEO of full-service webGIS- & IT-provider GeoDok Geoinformatik GmbH  
 Contact: ☎ +49 (0)521 98 68-84  
 ✉ [j.dressel@geodok.de](mailto:j.dressel@geodok.de) (url: [www.geodok.de](http://www.geodok.de)), Bielefeld (D)

Aachen / Bielefeld / Germany / May 2016